

ORIGINAL ARTICLE

Decreased serum vitamin D levels in early spontaneous pregnancy loss

W Hou^{1,2,5}, X-t Yan^{1,5}, C-m Bai², X-w Zhang^{1,3}, L-y Hui⁴ and X-w Yu¹

BACKGROUND/OBJECTIVES: Effects of vitamin D deficiency in pregnancy have been associated with some adverse pregnancy outcomes. The objective of this study was to analyze the relationship between vitamin D deficiency in childbearing aged women and pregnancy loss (PL) in the first trimester.

SUBJECTS/METHODS: This is a cross-sectional study. Plasma was collected from 60 nulliparous women with singleton at 7–9 weeks of gestation (30 with viable gestation and 30 with PL) and 60 non-gravid childbearing aged women (30 with a successful pregnancy history, and 30 with one or more spontaneous first-trimester PL history). Quantitation of serum 25-hydroxyvitamin D (25(OH)D) and 25-hydroxyvitamin D-1 alpha hydroxylase (CYP27B1) was assayed.

RESULTS: By pregnancy/non-gravid, normal pregnant women had higher 25(OH)D (49.32 µg/l) and CYP27B1 (82.00 pg/ml) than PL women (34.49 µg/l and 37.87 pg/ml, both $P < 0.01$); the non-gravid women with a successful pregnancy history also had higher 25(OH)D (39.56 µg/l) and CYP27B1 (39.04 pg/ml) than women with PL history (12.30 µg/l and 12.35 pg/ml, both $P < 0.01$). The 96.7% of non-gravid women with PL history and 43.3% of PL women had serum 25(OH)D concentrations below 30 µg/l. There was a strong association between low vitamin D levels and PL (odds ratio 1.71; 95% confidence interval: 1.2–2.4, $P < 0.001$). The regression analyses showed that PL was significantly inversely correlated with 25(OH)D ($P < 0.01$) and CYP27B1 levels ($P < 0.01$).

CONCLUSIONS: Vitamin D deficiency associated with PL in the first trimester of pregnancy. Decreased serum vitamin D levels among childbearing aged women with the failed clinical pregnancies history may predispose to increased risk for PL.

European Journal of Clinical Nutrition advance online publication, 25 May 2016; doi:10.1038/ejcn.2016.83

INTRODUCTION

Pregnancy loss (PL) is an adverse outcome of pregnancy in which conception does not result in a live-born child. Of clinically recognized pregnancies, 10–15% terminate with spontaneous loss. Early pregnancy loss (spontaneous miscarriage) is in China defined as the spontaneous termination of pregnancy before 12 gestational weeks.¹ The great majority of pregnancy losses occur early, before 12 weeks' gestation; hence, the pathophysiology is enough to be of major concern. Several mechanisms have previously been described for the pathogenesis of recurrent PL, including chromosomal anomalies, hormonal problems, uterine abnormalities, infections, autoimmune disorders and thrombophilias, and up to 50% of cases of recurrent PL will not have a clearly defined etiology.²

1,25 dihydroxy vitamin D₃ (1,25(OH)₂D₃) is a lipid-soluble hormone that has well-established classic function in maintaining calcium homeostasis and promoting bone mineralization.³ In addition, vitamin D₃ has significant roles in regulating cell proliferation and differentiation and modulating innate and adaptive immune responses.^{4,5} Vitamin D status during pregnancy has been drawing great attention. There is some evidence suggesting that vitamin D modulates human reproductive processes.⁶ Vitamin D deficiency is a common problem in childbearing age women and pregnant women in China.^{7,8} Poor vitamin D status during pregnancy has been associated with

preeclampsia,⁹ gestational diabetes,¹⁰ bacterial vaginosis¹¹ and compromised intrauterine growth.¹² However, the relationship of vitamin D deficiency and insufficiency in the first-trimester pregnancy with PL or non-gravid childbearing aged women with spontaneous pregnancy loss history is less clear. In addition, the vitamin D metabolic pathway involves multiple enzymatic reactions. Vitamin D is metabolized in the liver to the form 25 (OH)D, which is used to determine a patient's vitamin D status; 25 (OH)D is metabolized in the kidneys by 25-hydroxyvitamin D-1 alpha hydroxylase (CYP27B1) to its active form, 1,25-(OH)₂D.¹³ The increased synthesis of 1,25-(OH)₂D is linked to higher CYP27B1 activity in maternal kidney, placental trophoblasts and decidua.^{14,15} To date, little is known regarding the determinants of the levels of CYP27B1 in serum, nor have possible associations between the levels of the enzymes been explored in relation to PL in the first-trimester pregnancy. To determine whether altered vitamin D metabolic system is present in women with PL, we measured vitamin D and CYP27B1 in pregnant women with PL in the first trimester and non-gravid women displaying failed clinical pregnancy history in the first trimester. The objective of this study was to elucidate the association between maternal serum levels of 25(OH)D and CYP27B1 in the first-trimester pregnancy with the risk of PL in a population of Chinese women. In the same time, serum calcium, phosphorus and parathyroid hormone (PTH) concentrations were measured.

¹Department of Obstetrics & Gynecology, First Affiliated Hospital of Xi'an Jiaotong University, Xi'an, China; ²Department of Maternal Health Care, Maternal and Child Health Hospital of Shaanxi Province, Xi'an, China; ³Department of Obstetrics & Gynecology, Fourth hospital of Xi'an City, Xi'an, China and ⁴Laboratory Department, First Affiliated Hospital of Xi'an Jiaotong University, Xi'an, China. Correspondence: Dr X-w Yu, Department of Obstetrics & Gynecology, First Affiliated Hospital of Xi'an Jiaotong University, No. 277 Xi'an Yanta West Road, Xi'an 710061, China.

E-mail: yuxuewen2007@163.com

⁵These authors contributed equally to this work.

Received 22 December 2015; revised 21 March 2016; accepted 18 April 2016

MATERIALS AND METHODS

Research subjects

Women carrying singleton fetuses at 7–9-week gestation by first day of the last menstrual period gestation and non-gravid childbearing age women were enrolled from outpatient clinics at First Affiliated Hospital of Xi'an Jiaotong University and Maternal and Child Health Hospital of Shaanxi Province, China, from May 2013 to December 2014. All the participants were divided into four groups and determined as (1) PL group: women who were at 7–9 weeks of gestation, reporting unexplained vaginal bleeding, after being diagnosed with an intact gestational sac with no embryo cardiac motion, matched for gestational age by ultrasound, were inducted into the PL group. (2) Normal pregnant group: women who were gestationally matched to a group of pregnancies with viable gestation at 7–9 weeks without displaying abnormal gynecological history were included in the group. The controls were followed-up beyond 12 weeks of gestation. All gestational ages were determined by first day of the last menstrual period and confirmed with an ultrasound. The (1) and (2) were included in the early pregnancy group. (3) Non-gravid group 1: the non-gravid childbearing aged women who participated in pre-pregnancy examination displaying a successful clinical pregnancies history were recruited. (4) Non-gravid group 2: the non-gravid childbearing aged women who had prior pregnancies that had resulted in one or more spontaneous first-trimester miscarriage were enrolled. The (3) and (4) were included in the non-gravid group. Women diagnosed with thyroid dysfunction, autoimmune disorders, uterine anomalies, severe liver and kidney disease, diabetes mellitus, infection with rubella, toxoplasma, cytomegalovirus and herpes virus, and those administered hormonal and antiepileptic medication in the last 3 months, were excluded. All the PL women and non-gravid women with PL history had no chromosomal abnormalities. Data on the age, employment status and menstrual cycle duration of the women in all participating women were recorded, and their height and weight were measured. All women were in good general health and were required to provide written informed consent before participation. This study was approved by the Ethics Committee of the First Affiliated Hospital of Xi'an Jiaotong University (2 March 2012).

Measurement of serum 25(OH)D, CYP27B1, calcium, phosphorus and parathyroid hormone

Blood samples from fasting women were collected at times of usual blood draws for clinical indications (non-gravid women) and at 7–9 weeks gestational age in pregnant women. After centrifugation for 10 min at 3000 r.p.m. at room temperature, the serum specimens were stored at -80°C . Before assaying, all samples were thawed to room temperature and assayed on the same day to avoid inter-assay variation. Quantitation of serum 25(OH)D, CYP27B1 and PTH was performed using commercial ELISA kits (Catalog numbers CSB-E08097h, CSB-EL006406HU and CSB-E06934h, CUSABIO BIOTECH, Wuhan, China). The intra-assay and inter-assay precision for the ELISA were less than 10% and 15% for 25(OH)D, 8% and 10% for CYP27B1 and 8% and 10% for PTH, respectively. The optical density of each sample was determined using a microplate reader (SynergyMx, BioTek, Winooski, VT, USA) set to 450 nm. Serum calcium levels were analyzed on the Beckman Coulter AU5800 Clinical Chemistry System, using commercially available reagents (Beckman Coulter Experiment System, Suzhou, China). Phosphorus levels were analyzed using the spectrophotometry method with a commercial reagent kit (UW5-1, Beijing Solarbio Science & Technology, Beijing, China). All the assays were performed according to the manufacturer's instruction. Biological samples were blinded prior to analyses.

Categorization of vitamin D status

Precisely defining optimal serum levels of 25-hydroxyvitamin D is still a matter of great debate. Some experts recommended serum 25(OH)D concentrations $>50\text{ nmol/l}$ ($20\text{ }\mu\text{g/l}$) for adequate bone health.¹⁶ Most experts and clinical guidelines from The Endocrine Society recommended that the optimal level for promoting health was defined as 75 nmol/l ($30\text{ }\mu\text{g/l}$) or greater, insufficiency as between 50 and 72.5 nmol/l (20 and $29\text{ }\mu\text{g/l}$) and deficiency as 50 nmol/L ($20\text{ }\mu\text{g/l}$) or less.^{3,6,17–19} Therefore, in this study, sufficient vitamin D was defined as $\geq 30\text{ }\mu\text{g/l}$ and low vitamin D was $< 30\text{ }\mu\text{g/l}$.

Statistical analysis

Statistical analysis was performed using the SPSS-PC+ software (SPSS, Chicago, IL, USA). Serum levels were expressed as mean \pm s.e.m. and categorical data as number (%). Data that were normally distributed were analyzed with one-way ANOVA and the multiple comparison in ANOVA (including comparisons of 25(OH)D, calcium, phosphorus and PTH levels). Data that were not normally distributed were analyzed with the nonparametric test. Serum levels were expressed as median (interquartile range). The levels of CYP27B1 among the four groups were compared using a Kruskal–Wallis test for several independent samples. Differences in the early pregnant group and 25(OH)D, CYP27B1 and calcium were analyzed by binary logistic regression model in order to obtain any independent predictive factors correlated with early PL. A two-sided P -value ≤ 0.05 was considered statistically significant.

RESULTS

Distributions of sociodemographic characteristics among participant women

A total of 120 women were included in the study (mean age 28.56 ± 3.09 years, range 22–34 years). Of the 120 women, 60 of them were for early pregnant group including 30 for the normal pregnant group and 30 for the PL group, 60 for the non-gravid group including 30 for the non-gravid group 1 and 30 for the non-gravid group 2. Mean gestational age of recruitment was 52.7 ± 4.3 days.

Table 1 indicates that the four groups in this sample had no significant differences with regard to distributions of general characteristics including age, employment status, menstrual cycle duration, body mass index and season. There was no significant difference about gestational age between the PL group and the normal pregnant group.

The serum levels of 25(OH)D, CYP27B1, calcium, phosphorus and PTH among the normal pregnant group, the PL group, the non-gravid group 1 and the non-gravid group 2

The 25(OH)D and CYP27B1 levels were evaluated in all women in the study. By pregnancy/non-gravid, the early pregnancy group had higher 25(OH)D level ($41.90 \pm 15.56\text{ }\mu\text{g/l}$) than the non-gravid group ($25.93 \pm 16.30\text{ }\mu\text{g/l}$) ($t = 5.490$, $P = 0.000$). The mean 25(OH)D concentration was $49.32 \pm 11.65\text{ }\mu\text{g/l}$ (95% confidence interval (CI): 44.97 – $53.67\text{ }\mu\text{g/l}$) for the normal pregnant group, $34.49 \pm 15.60\text{ }\mu\text{g/l}$ (95% CI: 28.66 – $40.31\text{ }\mu\text{g/l}$) for the PL group, $39.56 \pm 8.83\text{ }\mu\text{g/l}$ (95% CI: 36.26 – $42.86\text{ }\mu\text{g/l}$) for the non-gravid group 1 and $12.30 \pm 8.84\text{ }\mu\text{g/l}$ (95% CI: 9.00 – $15.60\text{ }\mu\text{g/l}$) for the non-gravid group 2. The ANOVA test of 25(OH)D revealed that significantly differences exist among the four groups ($F = 55.040$, $P = 0.000$). Of them, the mean 25(OH)D concentration was the highest in the normal pregnant group and the lowest in the non-gravid group 2 (Figure 1). The frequency of low vitamin D was higher in early PL women and non-gravid childbearing aged women with PL history. There were 13 (43.3%) women and 29 (96.7%) women with a low serum 25(OH)D level in the PL group and the non-gravid group 2, whereas there were only 1 (3.3%) in the normal pregnant group and 1 (3.3%) in the non-gravid group 1. There was a statistically significant difference between the PL group and the normal pregnant group, the non-gravid group 2 and the non-gravid group 1 according to the low serum 25(OH)D percentage ($\chi^2 = 13.416$, $P = 0.000$ and 52.267 , 0.000 , respectively). There was a strong association between low vitamin D levels and PL (odds ratio (OR): 1.71; 95% CI: 1.2–2.4, $P < 0.001$).

For the CYP27B1, the nonparametric test revealed that there was significant differences among the four groups ($Z = 84.914$, $P = 0.000$). The women in the normal pregnant group exhibited higher CYP27B1 ($82.00 \pm 37.74\text{ pg/ml}$) levels than those in the PL group ($37.87 \pm 20.97\text{ pg/ml}$), the non-gravid group 1 ($39.04 \pm 16.05\text{ pg/ml}$; median 39.04 pg/ml , interquartile range 27.77 – 47.10 pg/ml) and the non-gravid group 2 ($12.35 \pm 5.11\text{ pg/ml}$).

Table 1. General characteristics of the normal pregnant group, the PL group, the non-gravid group 1 and the non-gravid group 2

Characteristic	Normal pregnancy		PL		Non-gravid 1		Non-gravid 2	
	%	Mean	%	Mean	%	Mean	%	Mean
Age, years ^a		28.33		28.53		28.90		28.47
Employment status ^b								
Employed full-time	83.33		90		86.67		83.33	
Homemaker	16.67		10		13.33		16.67	
Menstrual cycle ^c								
Regular	93.33		80		93.33		93.33	
Unregular	6.67		20		6.67		6.67	
Body Mass Index ^d		21.69		21.51		21.58		21.55
Gestational age, day ^e		53.1		52.3				
Season ^f								
Winter	26.67		26.67		13.33		13.33	
Autumn or spring	73.33		73.33		85.67		86.67	

Abbreviation: PL, pregnancy loss. ^a $f=0.181, P=0.909$. ^b $\chi^2=0.754, P=0.860$. ^c $\chi^2=4.444, P=0.217$. ^d $f=0.152, P=0.928$. ^e $t=0.707, P=0.482$. ^f $\chi^2=3.333, P=0.343$.

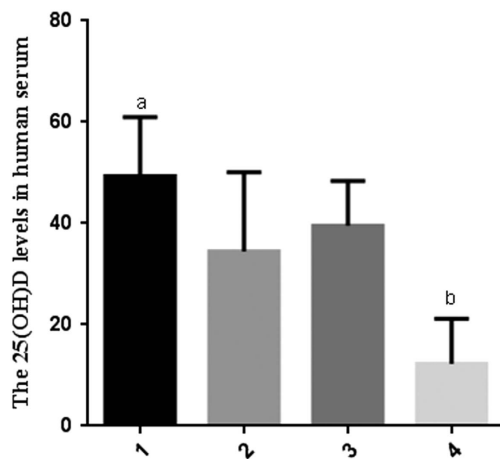


Figure 1. Comparison of serum 25(OH)D values in the normal pregnant group (1), the PL group (2), the non-gravid group 1 (3) and the non-gravid group 2 (4). a: Significantly higher compared with the PL group, the non-gravid group 1 and the non-gravid group 2 ($P=0.001, 0.003$ and 0.000 , respectively). b: Significantly lower compared with the PL group and the non-gravid group 1 ($P=0.000$ and 0.000 , respectively).

Compared with the non-gravid group 2, the PL group and the non-gravid group 1 displayed higher CYP27B1 levels (Figure 2).

Serum calcium, phosphorus levels and PTH concentrations were comparable in the four groups. In pregnant women, the mean levels of calcium, phosphorus and PTH were 1.56 ± 0.17 mmol/l, 1.02 ± 0.15 mmol/l and 227.36 ± 86.78 pg/ml, respectively, in the PL group, whereas they were 1.69 ± 0.17 mmol/l, 1.04 ± 0.22 mmol/l and 290.54 ± 157.60 pg/ml, respectively, in the normal group. In non-gravid women, the mean levels of calcium, phosphorus and PTH were 1.59 ± 0.20 mmol/l, 0.99 ± 0.10 mmol/l and 480.96 ± 252.88 pg/ml, respectively, in the non-gravid group 2, whereas they were 1.65 ± 0.16 mmol/l, 1.01 ± 0.12 mmol/l and 164.69 ± 66.13 pg/ml, respectively, in the non-gravid group 1. The differences for serum calcium and PTH levels were statistically significant ($F=3.323, P=0.022$, and $F=22.282, P=0.000$, respectively). The women in the PL group had lower calcium levels than women in the normal pregnant group and the non-gravid group 1

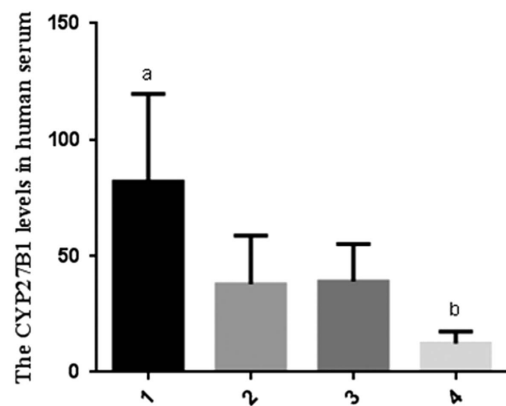


Figure 2. Comparison of serum CYP27B1 values in the normal pregnant group (1), the PL group (2), the non-gravid group 1 (3) and the non-gravid group 2 (4). a: Significantly higher compared with the PL group, the non-gravid group 1 and the non-gravid group 2 ($P=0.000, 0.000$ and 0.000 , respectively). b: Significantly lower compared with the PL group and the non-gravid group 1 ($P=0.000$ and 0.000 , respectively).

($P=0.005$ and 0.034 , respectively). However, there was no significant difference in PTH levels between the normal pregnant group and the PL group ($P=0.313$). The PTH levels in the PL group were higher than those in the non-gravid group 1 ($P=0.016$) and lower than those in the non-gravid group 2 ($P=0.000$). The difference for serum phosphorus levels was not statistically significant ($F=0.639, P=0.591$) (Table 2).

The relationship between early pregnancy loss and serum 25(OH)D and CYP27B1 levels

The correlations between early pregnancy loss and serum 25(OH)D and CYP27B1 levels were computed to determine whether they were predictive of risk of pregnancy loss during the first-trimester pregnancy. The logistic regression analyses in the early pregnancy group and 25(OH)D, CYP27B1 and calcium levels were performed. The results showed that the early pregnancy loss was significantly inversely correlated with 25(OH)D levels ($\text{Exp}(B)=0.911, P=0.006$) and CYP27B1 levels ($\text{Exp}(B)=0.944, P=0.001$). As concentration of

Table 2. Comparison of serum calcium, phosphorus and PTH in the normal pregnant group, the PL group, the non-gravid group 1 and the non-gravid group 2

Variables	Normal pregnancy	PL	Non-gravid 1	Non-gravid 2
Calcium (mmol/l) (mean \pm s.d.)	1.69 \pm 0.17 ^a	1.56 \pm 0.17 ^b	1.65 \pm 0.16	1.59 \pm 0.20
Phosphorus (mmol /l) (mean \pm s.d.)	1.04 \pm 0.22	1.02 \pm 0.15	1.01 \pm 0.12	0.99 \pm 0.10
PTH (pg/ml) (mean \pm s.d.)	290.54 \pm 157.60 ^c	227.36 \pm 86.78 ^c	164.69 \pm 66.13	480.96 \pm 252.88 ^d

Abbreviations: PL, pregnancy loss; PTH, parathyroid hormone. ^aSignificantly higher compared with the PL group and the non-gravid group 2 ($P=0.005$ and 0.043 , respectively). ^bSignificantly lower compared with the non-gravid group 1 ($P=0.034$). ^cSignificantly higher compared with the non-gravid group 1 ($P=0.001$ and 0.016 , respectively). ^dSignificantly higher compared with the normal pregnant group, the PL group and the non-gravid group 1 ($P=0.006$, 0.000 and 0.000 , respectively).

25(OH)D and CYP27B1 decreased, the risk of early pregnancy loss increased.

DISCUSSION

This study investigated the relationship between serum vitamin D status and CYP27B1 with PL in nulliparous women at an average gestational age of 52.7 ± 4.3 days and non-gravid childbearing aged women with or without PL history. Because circulating 25(OH)D represents the best indicator of vitamin D status of an individual²⁰ we measured serum 25(OH)D levels to determine vitamin D status. We found that 25(OH)D levels in early pregnant women were significantly higher than those in non-gravid women. The increase in circulating 25(OH)D levels during the first-trimester pregnancy is consistent with a prior report that reported that 1,25(OH)₂D levels are more than 2-fold those of a non-gravid adult by 12 weeks of gestation,²¹ although the 1,25(OH)₂D was tested in this study. However, during pregnancy, 25(OH)D diffuses across the placental barrier, whereas 1,25(OH)₂D does not readily cross placenta.^{22,23} The locally synthesizing 1,25(OH)₂D in maternal decidual cells depends on available 25(OH)D in circulation as a substrate for 1 α -hydroxylase.^{24,25} It demonstrated that adequate 25(OH)D concentrations were essential during pregnancy. Vitamin D deficiency in the mother could be vertically transmitted to the fetus. We also found that the early PL women had a significantly lower 25(OH)D levels than normal early pregnant women and had a low vitamin D rate of 43.3%; however, 96.7% of normal early pregnant women revealed vitamin D sufficient. The risk (OR) of PL in pregnant women with low concentration of 25(OH)D is 1.71 (95% CI: 1.2–2.4). It means that vitamin D deficiency was associated with PL in the first-trimester pregnancy. In combination with immunomodulatory and anti-inflammatory properties of vitamin D,^{26–29} vitamin D may have a potential role in the prevention of FL in the first trimester of pregnancy. Several epidemiologic and case–control studies investigated a possible association between vitamin D deficiency and adverse pregnancy outcome.^{30,31} The data of the role vitamin D has in miscarriage are sparse. Andersen *et al.*³² investigated the association between maternal serum concentrations of serum 25(OH)D and the risk of subsequent miscarriage and found the association between Vitamin D insufficiency and the first-trimester miscarriages. Ozkan *et al.*³³ considered that the follicular fluid 25(OH)D levels are an independent predictor of successful clinical pregnancy following *in vitro* fertilization; however, serum and follicular fluid levels of 25(OH)D are highly correlated. Another two studies did not find an association between vitamin D deficiency and the clinical outcome of miscarriage in the first-trimester pregnancy.^{34,35} This discrepancy may be explained not only by methodological differences but also by differences in our study population relative to other published studies, including the difference in maternal age and gestational age of specimen collection. Cohort and interventional studies are needed to

confirm the causal relationship and to find the potential therapeutic benefits of vitamin D supplementation.

Similar to the vitamin D, the serum CYP27B1 levels were significantly decreased in the PL women comparing with normal pregnancy in the first trimester of pregnancy. It has been proposed that the CYP27B1 gene evolved to produce 1,25(OH)₂D. Studies *in vitro* have shown that the CYP27B1 catalyzes localized conversion of 25OHD to 1,25(OH)₂D, the biologically active vitamin D metabolite.²³ During pregnancy, serum levels of 1,25(OH)₂D increase markedly from the first trimester, and these increases have been found to be associated with expression of the CYP27B1 and its activity in placenta.³⁶ However, the mechanisms underlying improved CYP27B1 levels during pregnancy remain elusive, with high levels of CYP27B1 expression occurring in early pregnant serum, indicating an important role for 1,25(OH)₂D during the first-trimester pregnancy. It is likely that CYP27B1 modulates immune function during early gestation.³⁷ Moreover, CYP27B1 is correlated with the female reproductive function, because the CYP27B1-null mice have resulted in female infertility with impaired ovarian follicular development, corpus luteum formation and uterine hypoplasia.³⁸ Thus, understanding specific factors involved in regulating the CYP27B1 and altering levels of the enzyme may have therapeutic potential for the treatment of recurrent PL.

For the healthy women of childbearing age, the serum level of vitamin D is higher than the women suffering from polycystic ovaries syndrome (PCOS).^{39,40} Sixty-eight percent PCOS patients had vitamin D deficiency.⁴¹ Likewise, low levels of 25(OH)D and vitamin D deficiency were found to be associated with a higher occurrence of uterine myomas⁴² and lower rates of follicle development after ovarian stimulation with 50 mg clomiphene citrate.⁴³ Similarly, among women of childbearing age, we found that having one or more histories of failed clinical pregnancy in the first trimester was significantly associated with vitamin D deficiency. The 96.7% of non-gravid childbearing aged women reported having a successful clinical pregnancy history had sufficient serum 25(OH)D concentrations; however, 96.7% of women with one or more histories of failed clinical pregnancy had serum 25(OH)D concentrations below 30 μ g/l. It suggested that decreased serum vitamin D levels among those women with the failed clinical pregnancies history may predispose to increased risk for PL. The information was valuable for women's health-care providers to provide better counseling for women concerning their possible reason of early PL. We suggest that women of childbearing age with the failed clinical pregnancies history may be evaluated for their vitamin D status among pre-conception counseling.

In conclusion, our results confirmed the association between PL and decreased vitamin D levels. Decreased serum vitamin D levels among childbearing aged women with the failed clinical pregnancies history may predispose to increased risk for PL. Therefore, we propose that childbearing aged women with the failed clinical pregnancies history may be screened for their

vitamin D levels among pre-conception counseling. Further, periconceptional intervention programs to focus on raising vitamin D levels in these women should be carried out in order to prevent vitamin D deficiency-linked PL.

CONFLICT OF INTEREST

The authors declare no conflict of interest.

ACKNOWLEDGEMENTS

We acknowledge all women who were willing to participate in the research. This work was supported by a grant from a National Natural Science Foundation of China (No. 81270697).

AUTHOR CONTRIBUTIONS

WH and XTY collected the data and analyzed the data. XTY performed the experiment. CMB and LYH assisted with data collection/data entry/experiment perform. XWY conceived and designed the experiments, and wrote the paper. XWY and XWZ contributed to the interpretation of the results and in editing and revising the manuscript.

REFERENCES

- Yinping H Spontaneous abortion In: Yue J *Obstetrics and Gynecology*. 7th edn, People's Health Publishing House: Beijing, 2008, pp 83–86.
- The Practice Committee of the American Society for Reproductive Medicine. Evaluation and treatment of recurrent pregnancy loss: a committee opinion. *Fertil Steril* 2012; **98**: 1103–1111.
- Holick MF. Vitamin D deficiency. *N Engl J Med* 2007; **357**: 266–281.
- Bikle DD. Vitamin D regulation of immune function. *Vitam Horm* 2011; **86**: 1–21.
- Lagishetty V, Liu NQ, Hewison M. Vitamin D metabolism and innate immunity. *Mol Cell Endocrinol* 2011; **347**: 97–105.
- Lerchbaum E, Rabe T. Vitamin D and female fertility. *Curr Opin Obstet Gynecol* 2014; **26**: 145–150.
- Woo J, Lam CWK, Leung J, Lau WY, Lau E, Xu L et al. Very high rates of vitamin D insufficiency in women of child-bearing age living in Beijing and Hong Kong. *Br J Nutr* 2008; **99**: 1330–1334.
- Song SJ, Zhou L, Si SY, Ji Liu, Ji Zhou, Feng K et al. The high prevalence of vitamin D deficiency and its related maternal factors in pregnant women in Beijing. *PLoS One* 2013; **8**: e85081.
- Bodnar LM, Catov JM, Simhan HN, Holick MF, Powers RW, Roberts JM. Maternal vitamin D deficiency increases the risk of preeclampsia. *J Clin Endocrinol Metab* 2007; **92**: 3517–3522.
- Cho GJ, Hong SC, Oh MJ, Kim HJ. Vitamin D deficiency in gestational diabetes mellitus and the role of the placenta. *Am J Obstet Gynecol* 2013; **209**: e1–e8.
- Bodnar LM, Krohn MA, Simhan HN. Maternal vitamin D deficiency is associated with bacterial vaginosis in the first trimester of pregnancy. *J Nutr* 2009; **139**: 1157–1161.
- Leffelaar ER, Vrijkotte TG, van Eijsden M. Maternal early pregnancy vitamin D status in relation to fetal and neonatal growth: results of the multiethnic Amsterdam Born Children and their Development cohort. *Br J Nutr* 2010; **104**: 108–117.
- Christakos S, Dhawan P, Benn B, Porta A, Hediger M, Oh GT et al. Vitamin D: Molecular mechanism of action. *Ann N Y Acad Sci* 2007; **1116**: 340–348.
- Diaz L, Sanchez I, Avila E, Halhali A, Vilchis F, Larrea F. Identification of a 25-hydroxyvitamin D₃ 1alpha-hydroxylase gene transcription product in cultures of human syncytiotrophoblast cells. *J Clin Endocrinol Metab* 2000; **85**: 2543–2549.
- Whitsett JA, Ho M, Tsang RC, Norman EJ, Adams KG. Synthesis of 1,25-dihydroxyvitamin D₃ by human placenta in vitro. *J Clin Endocrinol Metab* 1981; **53**: 484–488.
- Vitamin D Working Group of Osteoporosis Committee of China Gerontological Society. Application guideline for vitamin D and bone health in adult Chinese (2014 Standard Edition). *Chin J Osteoporosis* 2014; **20**: 1011–1030.
- Holick MF, Binkley NC, Bischoff-Ferrari HA, Gordon CM, Hanley DA, Heaney RP et al. Evaluation, treatment, and prevention of vitamin D deficiency: an Endocrine Society clinical practice guideline. *J Clin Endocrinol Metab* 2011; **96**: 1911–1930.
- Hosseini-nezhad A, Holick MF. Vitamin D for health: a global perspective. *Mayo Clin Proc* 2013; **88**: 720–755.
- Bodnar LM, Simhan HN. Vitamin D may be a link to black-white disparities in adverse birth outcomes. *Obstet Gynecol Surv* 2010; **65**: 273–284.
- Rosen CJ. Clinical practice. Vitamin D insufficiency. *N Engl J Med* 2011; **364**: 248–254.

- Wagner CL, Taylor SN, Johnson DD, Hollis BW. The role of vitamin D in pregnancy and lactation: emerging concepts. *Women Health* 2012; **8**: 323–340.
- Shin JS, Choi MY, Longtine MS, Nelson DM. Vitamin D effects on pregnancy and the placenta. *Placenta* 2010; **31**: 1027–1034.
- Adams JS, Hewison M. Extrarenal expression of the 25-hydroxyvitamin D-1-hydroxylase. *Arch Biochem Biophys* 2012; **523**: 95–102.
- Hewison M, Burke F, Evans KN, Lammis D, Sansom DM, Liu P et al. Extra-renal 25-hydroxyvitamin D₃-1alpha-hydroxylase in human health and disease. *J Steroid Biochem Mol Biol* 2007; **103**: 316–321.
- Weisman Y, Harell A, Edelstein S, David M, Spirer Z, Golander A. 1 alpha, 25-Dihydroxyvitamin D₃ and 24,25-dihydroxyvitamin D₃ in vitro synthesis by human decidua and placenta. *Nature* 1979; **281**: 317–319.
- Ota K, Dambaeva S, Han AR, Beaman K, Gilman-Sachs A, Kwak-Kim J. Vitamin D deficiency may be a risk factor for recurrent pregnancy losses by increasing cellular immunity and autoimmunity. *Hum Reprod* 2014; **29**: 208–219.
- Twig G, Shina A, Amital H, Shoenfeld Y. Pathogenesis of infertility and recurrent pregnancy loss in thyroid autoimmunity. *J Autoimmun* 2012; **38**: J275–J281.
- Dabrowski FA, Grzechocinska B, Wielgos M. The role of vitamin D in reproductive health-A trojan horse or the golden fleece? *Nutrients* 2015; **7**: 4139–4153.
- Tavakoli M, Jeddi-Tehrani M, Salek-Moghaddam A, Rajaei S, Mohammadzadeh A, Sheikhhasani S et al. Effects of 1, 25(OH)₂ vitamin D₃ on cytokine production by endometrial cells of women with recurrent spontaneous abortion. *Fertil Steril* 2011; **96**: 751–757.
- Olmos-Ortiz A, Avila E, Durand-Carbajal M, Diaz L. Regulation of calcitriol biosynthesis and activity: focus on gestational vitamin D deficiency and adverse pregnancy outcomes. *Nutrients* 2015; **7**: 443–480.
- Grundmann M, von Versen-Höyneck F. Vitamin D - roles in women's reproductive health? *Reprod Biol Endocrinol* 2011; **9**: 146.
- Andersen LB, Jørgensen JS, Jensen TK, Dalgård C, Barington T, Nielsen J et al. Vitamin D insufficiency is associated with increased risk of first-trimester miscarriage in the Odense Child Cohort. *Am J Clin Nutr* 2015; **102**: 633–638.
- Ozkan S, Jindal S, Greenseed K, Shu J, Zeitlian G, Hickmon C et al. Replete vitamin D stores predict reproductive success following IVF. *Fertil Steril* 2010; **94**: 1314–1319.
- Møller UK, Streym S, Heickendorff L, Mosekilde L, Rejnmark L. Effects of 25OHD concentrations on chances of pregnancy and pregnancy outcomes: a cohort study in healthy Danish women. *Eur J Clin Nutr* 2012; **66**: 862–868.
- Flood-Nichols SK, Tinnemore D, Huang RR, Napolitano P, Ippolito DL. Vitamin D deficiency in early pregnancy. *PLoS ONE* 2015; **10**: e0123763.
- O'Brien KO, Li S, Cao C, Kent T, Young BV, Queenan RA et al. Placental CYP27B1 and CYP24A1 expression in human placental tissue and their association with maternal and neonatal calcitropic hormones. *J Clin Endocrinol Metab* 2014; **99**: 1348–1356.
- Zehnder D, Evans KN, Kilby MD, Bulmer JN, Innes BA, Stewart PM et al. The ontogeny of 25-hydroxyvitamin D₃ 1alpha-hydroxylase expression in human placenta and decidua. *Am J Pathol* 2002; **161**: 105–114.
- Sun W, Xie H, Ji J, Zhou X, Goltzman D, Miao D. Defective female reproductive function in 1,25(OH)₂D-deficient mice results from indirect effect mediated by extracellular calcium and/or phosphorus. *Am J Physiol Endocrinol Metab* 2010; **299**: E928–E935.
- He C, Lin Z, Robb SW, Ezeamama AE. Serum vitamin D levels and polycystic ovary syndrome: a systematic review and meta-analysis. *Nutrients* 2015; **7**: 4555–4577.
- Ghadimi R, Esmaeilzadeh S, Firoozpour M, Ahmadi A. Does vitamin D status correlate with clinical and biochemical features of polycystic ovarysyndrome in high school girls? *Caspian J Intern Med* 2014; **5**: 202–208.
- Velija-Asimi Z. Evaluation of the association of vitamin D deficiency with gonadotropins and sex hormone in obese and non-obese women with polycystic ovary syndrome. *Med Glas* 2014; **11**: 170–176.
- Paffoni A, Somigliana E, Viganò P, Benaglia L, Cardellicchio L, Pagliardini L et al. Vitamin D status in women with uterine leiomyomas. *J Clin Endocrinol Metab* 2013; **98**: E1374–E1378.
- Ott J, Watter L, Kurz C, Seemann R, Huber JC, Mayerhofer K et al. Parameters for calcium metabolism in women with polycystic ovary syndrome who undergo clomiphene citrate stimulation: a prospective cohort study. *Eur J Endocrinol* 2012; **166**: 897–902.



This work is licensed under a Creative Commons Attribution-NonCommercial-NoDerivs 4.0 International License. The images or other third party material in this article are included in the article's Creative Commons license, unless indicated otherwise in the credit line; if the material is not included under the Creative Commons license, users will need to obtain permission from the license holder to reproduce the material. To view a copy of this license, visit <http://creativecommons.org/licenses/by-nc-nd/4.0/>