

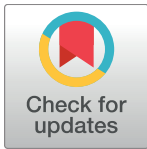
RESEARCH ARTICLE

# Breast cancer risk markedly lower with serum 25-hydroxyvitamin D concentrations $\geq 60$ vs $< 20$ ng/ml (150 vs 50 nmol/L): Pooled analysis of two randomized trials and a prospective cohort

Sharon L. McDonnell<sup>1\*</sup>, Carole A. Baggerly<sup>1</sup>, Christine B. French<sup>1</sup>, Leo L. Baggerly<sup>1</sup>, Cedric F. Garland<sup>2</sup>, Edward D. Gorham<sup>2</sup>, Bruce W. Hollis<sup>3</sup>, Donald L. Trump<sup>4</sup>, Joan M. Lappe<sup>5</sup>

**1** GrassrootsHealth, Encinitas, California, United States of America, **2** Department of Family Medicine and Public Health, University of California San Diego, La Jolla, California, United States of America, **3** Medical University of South Carolina, Charleston, South Carolina, United States of America, **4** Inova Schar Cancer Institute, Falls Church, Virginia, United States of America, **5** Department of Medicine, Creighton University, Omaha, Nebraska, United States of America

\* [sharon@grassrootshealth.org](mailto:sharon@grassrootshealth.org)



OPEN ACCESS

**Citation:** McDonnell SL, Baggerly CA, French CB, Baggerly LL, Garland CF, Gorham ED, et al. (2018) Breast cancer risk markedly lower with serum 25-hydroxyvitamin D concentrations  $\geq 60$  vs  $< 20$  ng/ml (150 vs 50 nmol/L): Pooled analysis of two randomized trials and a prospective cohort. PLoS ONE 13(6): e0199265. <https://doi.org/10.1371/journal.pone.0199265>

**Editor:** Ramesh Narayanan, University of Tennessee Health Science Center, UNITED STATES

**Received:** January 16, 2018

**Accepted:** June 1, 2018

**Published:** June 15, 2018

**Copyright:** This is an open access article, free of all copyright, and may be freely reproduced, distributed, transmitted, modified, built upon, or otherwise used by anyone for any lawful purpose. The work is made available under the [Creative Commons CC0](https://creativecommons.org/licenses/by/4.0/) public domain dedication.

**Data Availability Statement:** The data is available through the Zenodo repository and can be accessed at <https://doi.org/10.5281/zenodo.1219747>.

**Funding:** The 2007 Lappe RCT was funded by the National Institute of Aging. The 2017 Lappe RCT was funded by the National Cancer Institute and Creighton University internal funding. GrassrootsHealth is a nonprofit entity; this project

## Abstract

### Background

While numerous epidemiologic studies have found an association between higher serum 25-hydroxyvitamin D [25(OH)D] concentrations and lower breast cancer risk, few have assessed this association for concentrations  $> 40$  ng/ml.

### Objective

To investigate the relationship between 25(OH)D concentration and breast cancer risk across a broad range of 25(OH)D concentrations among women aged 55 years and older.

### Methods

Analyses used pooled data from two randomized clinical trials (N = 1129, N = 2196) and a prospective cohort (N = 1713) to examine a broad range of 25(OH)D concentrations. The outcome was diagnosis of breast cancer during the observation periods (median: 4.0 years). Three analyses were conducted: 1) Incidence rates were compared according to 25(OH)D concentration from  $< 20$  to  $\geq 60$  ng/ml ( $< 50$  to  $\geq 150$  nmol/L), 2) Kaplan-Meier plots were developed and 3) multivariate Cox regression was used to examine the association between 25(OH)D and breast cancer risk using multiple 25(OH)D measurements.

### Results

Within the pooled cohort (N = 5038), 77 women were diagnosed with breast cancer (age-adjusted incidence: 512 cases per 100,000 person-years). Results were similar for the three

was funded by self-sponsorship by the participants and donations from Bio-Tech Pharmacal, Pure North S'Energy Foundation, and the Vitamin D Society. These funds provided the resources for the study design and data collection for the GRH study and the analysis and interpretations of this pooled analysis. The funders had no role in study design, data collection and analysis, decision to publish, or preparation of the manuscript.

**Competing interests:** Bio-Tech Pharmacal was a commercial source of funding. It did not have any relationship with GrassrootsHealth, UC San Diego, MUSC, Inova Schar, or Creighton University with regard to employment, patents, projects in development, or products marketed. Representatives of this source did not review the manuscript or play any role in design, analysis, or writing of the manuscript and had no control over any decision to publish it. This does not alter our adherence to PLOS ONE policies on sharing data and materials.

analyses. First, comparing incidence rates, there was an 82% lower incidence rate of breast cancer for women with 25(OH)D concentrations  $\geq 60$  vs  $< 20$  ng/ml (Rate Ratio = 0.18,  $P = 0.006$ ). Second, Kaplan-Meier curves for concentrations of  $< 20$ , 20–39, 40–59 and  $\geq 60$  ng/ml were significantly different ( $P = 0.02$ ), with the highest proportion breast cancer-free in the  $\geq 60$  ng/ml group (99.3%) and the lowest proportion breast cancer-free in the  $< 20$  ng/ml group (96.8%). The proportion with breast cancer was 78% lower for  $\geq 60$  vs  $< 20$  ng/ml ( $P = 0.02$ ). Third, multivariate Cox regression revealed that women with 25(OH)D concentrations  $\geq 60$  ng/ml had an 80% lower risk of breast cancer than women with concentrations  $< 20$  ng/ml (HR = 0.20,  $P = 0.03$ ), adjusting for age, BMI, smoking status, calcium supplement intake, and study of origin.

## Conclusions

Higher 25(OH)D concentrations were associated with a dose-response decrease in breast cancer risk with concentrations  $\geq 60$  ng/ml being most protective.

## Introduction

Breast cancer is the most common non-skin cancer in women [1]. More than 252,000 new cases of female breast cancer and 40,600 deaths were projected to occur in 2017 in the United States [1]. While more early detection and improvements in treatment have reduced the mortality rate, there has been no reduction in the incidence of breast cancer in the past 20 years [2]. Identifying and implementing effective primary prevention strategies could reduce breast cancer incidence rates.

Epidemiologic studies by Gorham et al. [3,4] and Garland et al. [5] were the first to propose that vitamin D prevents breast cancer. Since then, the mechanisms by which vitamin D might prevent the development and growth of breast cancer have been well documented [6] and numerous epidemiologic studies have found an association between higher serum 25-hydroxyvitamin D [25(OH)D] concentrations, the physiological measure of vitamin D status, and a lower risk of breast cancer [7–18]. However, few studies have assessed this association in concentrations  $> 40$  ng/ml [7,8].

The objective of this analysis was to investigate the relationship between 25(OH)D concentration and breast cancer risk across a broad range of 25(OH)D concentrations among women aged 55 years and older. Data from two randomized clinical trials (RCT) and a prospective cohort study were pooled: the 2007 Lappe et al. cohort (RCT, median 25(OH)D = 31 ng/ml,  $N = 1129$ ) [19,20], the 2017 Lappe et al. cohort (RCT, median 25(OH)D = 36 ng/ml,  $N = 2196$ ) [21], and the GrassrootsHealth cohort (prospective cohort study, median 25(OH)D = 49 ng/ml,  $N = 1713$ ) [20]. This pooled cohort provided a larger sample size for improved statistical power and allowed for analysis across a broad range of 25(OH)D concentrations that would otherwise not have been possible due to the lack of a sufficient number of participants with 25(OH)D concentrations higher than 40 ng/ml.

## Materials and methods

Women in the 2007 Lappe et al. cohort (hereafter termed 2007 Lappe cohort) participated in a four year, population-based, double-blind, placebo-controlled trial of vitamin D and calcium supplementation in a 9-county area in Eastern Nebraska. Participants were randomly assigned

to: 1) calcium plus vitamin D3 (1400–1500 mg/day of calcium plus 1100 IU/day of vitamin D3), 2) calcium (calcium as mentioned previously plus vitamin D placebo), or 3) control (calcium and vitamin D placebos). This trial was registered at [clinicaltrials.gov](https://clinicaltrials.gov) as NCT00352170.

In another study, women in the 2017 Lappe et al. cohort (hereafter termed 2017 Lappe cohort) participated in a four year, population-based, double-blind, placebo-controlled trial of vitamin D and calcium supplementation in a 31-county area in Eastern Nebraska. Participants were randomly assigned to: 1) intervention (1500 mg/day of calcium and 2000 IU/day of vitamin D3) or 2) control (calcium and vitamin D placebos). This trial was registered at [clinicaltrials.gov](https://clinicaltrials.gov) as NCT01052051.

For both Lappe cohorts, inclusion criteria included women aged 55 years or older who were free of known cancer at enrollment and within the prior 10 years. As described previously [19–22], supplement intake by bottle weight and health status were assessed at 6-month intervals. Medical records were examined to confirm reports of cancer diagnosis and ascertain diagnosis date. Participants who did not complete at least two health assessments were excluded from this study because of lack of prospective data. Serum 25(OH)D concentrations were measured at enrollment and annually thereafter using radioimmunoassay (IDS Radioimmunoassay (RIA) kit, Fountain Hills, AZ for the 2007 cohort and Liaison<sup>®</sup> Analyzer, Diasorin, Stillwater, MN for the 2017 cohort) at the Creighton University Osteoporosis Research Center Laboratory (Omaha, NE). The intra-assay coefficient of variation was 5% for IDS RIA and 5% for Liaison<sup>®</sup>. Additionally, the Creighton Laboratory participates in the Vitamin D External Quality Assessment Scheme (DEQAS) with findings on test samples regularly close to the international mean. Detailed descriptions of the Lappe trials and results of other outcomes can be found elsewhere [19–22]. All participants provided written informed consent and the studies were approved by the Creighton University Institutional Review Board (Omaha, NE).

Women in the GrassrootsHealth cohort participated in a prospective population-based cohort study run by a non-profit public health research organization. Voluntary participants, who reside in 57 countries worldwide (91% in the United States or Canada) submitted home blood spot 25(OH)D test kits and completed online health questionnaires. There were no exclusion criteria nor any requirements related to 25(OH)D concentration or supplement intake dose. Participants included both genders and a wide range of ages; however, only female participants aged 55 years or older who were free of known cancer at enrollment and within the prior 10 years who completed at least two health assessments were included in this pooled analysis to match the inclusion criteria of the Lappe cohorts. As described previously [20], cancer diagnosis dates and cancer type were reported as were average daily calcium supplement intake, age, smoking status, height, and weight. Serum 25(OH)D concentrations were determined by analysis of dried blood spot test kits using liquid chromatography-mass spectroscopy (LC-MS/MS) by ZRT Laboratory (Beaverton, OR) or Purity Laboratory (Lake Oswego, OR). The intra-assay coefficient of variation was 9% for ZRT and 5% for Purity. Additionally, the ZRT and Purity assays have been validated against the DEQAS LC-MS/MS consensus group ( $R^2$  values of 0.998 and 0.994 respectively). LC-MS/MS with dried blood spot cards has been validated against the radioimmunoassay method ( $R^2$  value of 0.91 and a slope not different from 1.0) [23]. All participants provided informed consent and the study was approved by the Western Institutional Review Board (Olympia, WA).

Overall, this analysis included 1129 women from the 2007 Lappe cohort (median follow-up time, 4.0 years), 2196 women from the 2017 Lappe cohort (median follow-up time, 4.0 years), and 1713 women from the GrassrootsHealth cohort (median follow-up time, 1.9 years) (pooled cohort  $N = 5038$ ; median follow-up time, 4.0 years).

## Statistical methods

Demographic characteristics were summarized and comparisons between cohorts were performed using Kruskal-Wallis tests for age, BMI, calcium supplement intake (study and non-study combined for Lappe cohorts), and serum 25(OH)D. The chi-square test was used for smoking status. While data was collected for all types of cancer diagnoses, the outcome of interest for this current study was the diagnosis of breast cancer (invasive or in situ) during the observation periods. Age-adjusted breast cancer incidence rates were calculated using direct standardization to the 2010 US population [24].

Three analyses were conducted to investigate the relationship between 25(OH)D concentration and breast cancer. First, breast cancer incidence rates and their 95% confidence intervals (95% CI) were calculated for successive 20 ng/ml strata of serum 25(OH)D concentration from <20 to  $\geq 60$  ng/ml using a moving average method [25–27] to assess incidence trends across the range of 25(OH)D. A rate ratio (incidence density ratio) for <20 vs  $\geq 60$  was calculated to compare incidence rates.

Second, Kaplan-Meier curves comparing the proportion of breast cancer-free participants by 25(OH)D group were developed to estimate breast cancer-free survival over time and account for varying lengths of follow-up. Four a priori categories of 25(OH)D were used: <20 ng/ml, 20–39 ng/ml, 40–59 ng/ml, and  $\geq 60$  ng/ml. The 20 ng/ml cut point is from the National Academy of Medicine (NAM, formerly Institute of Medicine) recommendation for bone health [28], the 40 ng/ml cut point is from articles recommending this concentration for the prevention of cancer [29–33], and the 60 ng/ml cut point is from the Lowe et al. study showing reduced breast cancer risk above this concentration [7] and is the top end of the range recommended by a consortium of scientists and physicians to prevent many diseases including breast cancer [29]. Participants were allowed to move between strata of 25(OH)D according to changes in 25(OH)D concentration over the course of the observation periods.

Third, multivariate Cox regression was used to quantify the association between serum 25(OH)D and the risk of breast cancer after adjusting for the following breast cancer risk factors: age, BMI, smoking status, and calcium supplement intake. Indicator variables for study of origin were included to adjust for differences in study methods and demographics. Serum 25(OH)D concentration was assessed as a categorical variable (<20 ng/ml, 20–39 ng/ml, 40–59 ng/ml, and  $\geq 60$  ng/ml), as was calcium supplement intake (<1000 mg/day vs  $\geq 1000$  mg/day) based on the NAM recommendation for bone health [28]. Serum 25(OH)D concentration and calcium supplement intake changed during the course of the studies for most participants; therefore, these variables were entered as time varying covariates (multiple values were used for each participant to allow for changes in status over time). Age and BMI at baseline were entered as continuous variables and smoking status at baseline was entered as a categorical variable for “current smoker” (yes/no). Since breast cancers diagnosed in the first year were likely present but undiagnosed at study entry, multivariate Cox regression was repeated including only participants free of breast cancer at one year. Additionally, restricted cubic splines with three knots in default locations were used to assess the nature of the association between 25(OH)D (as a continuous variable) and cancer risk, including possible increased risk in the upper serum concentrations. Analyses and graphics were done with the R software ([www.r-project.org](http://www.r-project.org)).

## Results

Baseline demographic characteristics of the pooled and individual cohorts are shown in [Table 1](#). The GrassrootsHealth cohort had a lower median age, BMI, and calcium supplement intake and a lower proportion of participants who were current smokers than either Lappe

**Table 1. Characteristics of the pooled, 2007 Lappe, 2017 Lappe, and GrassrootsHealth cohorts.**

	Pooled cohort (N = 5038)	2007 Lappe cohort (N = 1129)	2017 Lappe cohort (N = 2196)	GrassrootsHealth cohort (N = 1713)	P-value <sup>a</sup>
Age (years): median (IQR <sup>b</sup> )	63 (59–69)	66 (60–71)	63 (59–69)	61 (57–66)	<0.0001
BMI: median (IQR <sup>b</sup> )	27 (23–32)	28 (25–32)	29 (25–33)	24 (21–28)	<0.0001
Smoking status: N (%)					<0.0001
Current smoker	272 (5%)	104 (9%)	130 (6%)	38 (2%)	
Never or former smoker	4765 (95%)	1025 (91%)	2066 (94%)	1674 (98%)	
Calcium supplement intake: median (IQR <sup>b</sup> )	600 (91–1271)	1176 (483–1616)	825 (373–1448)	100 (0–600)	<0.0001
Serum 25(OH)D (ng/ml): median (IQR <sup>b</sup> )					
Baseline	34 (27–43)	28 (23–34)	33 (26–39)	43 (33–58)	<0.0001
Most recent <sup>c</sup> :	38 (29–50)	31 (24–39)	36 (29–46)	49 (37–64)	<0.0001

<sup>a</sup>Statistical comparison of characteristics between the 2007 Lappe, 2017 Lappe, and GrassrootsHealth cohorts. Age, BMI, calcium supplement intake, and serum 25(OH)D concentration were compared using Kruskal-Wallis tests. Smoking status was compared using chi-square test. All risk factors were significantly different ( $P < 0.0001$ ) between cohorts and were included in the multivariate Cox regression model to account for these differences.

<sup>b</sup>IQR, interquartile range.

<sup>c</sup>Most recent measurement prior to end of observation (or diagnosis for cases).

<https://doi.org/10.1371/journal.pone.0199265.t001>

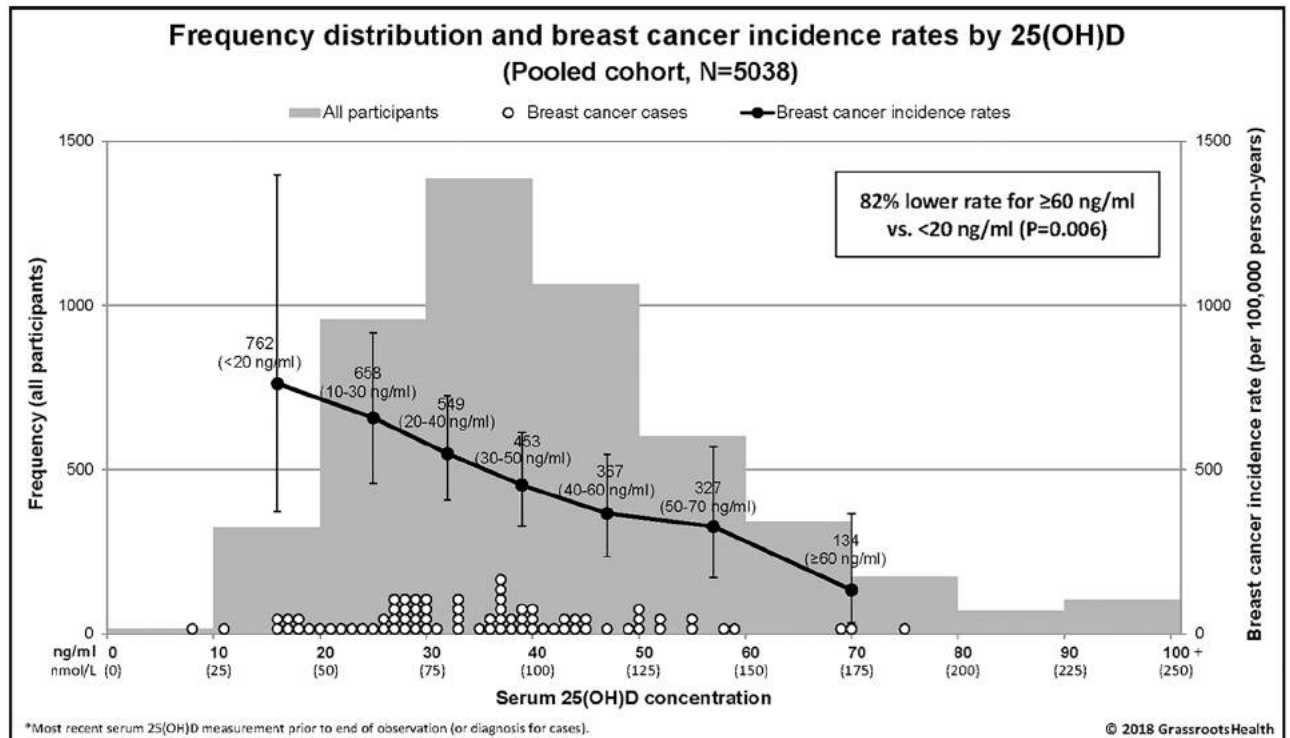
cohort. The 2007 Lappe cohort had the lowest baseline median serum 25(OH)D concentration (28 ng/ml) and the GrassrootsHealth cohort had the highest (43 ng/ml).

During the observation periods, 77 women in the pooled cohort were diagnosed with breast cancer (19 from the 2007 Lappe cohort, 44 from the 2017 Lappe cohort, and 14 from the GrassrootsHealth cohort). The age-adjusted incidence rate of breast cancer was 512 cases per 100,000 person-years in the pooled cohort (458 cases per 100,000 person-years in the 2007 Lappe cohort, 619 cases per 100,000 person-years in the 2017 Lappe cohort, and 337 cases per 100,000 person-years in the GrassrootsHealth cohort).

Within the pooled cohort, results were similar for the three analyses used to investigate the relationship between 25(OH)D concentration and breast cancer (incidence rate comparison, Kaplan-Meier plot, and multivariate Cox regression). First, breast cancer incidence rates according to 25(OH)D group are shown in Fig 1. Rates were lower with higher serum 25(OH)D categories (Fig 1). Comparing incidence rates, there was an 82% lower incidence rate of breast cancer for  $\geq 60$  ng/ml vs  $< 20$  ng/ml (Rate Ratio = 0.18, 95% CI: 0.04–0.62,  $P = 0.006$ ).

Second, Kaplan-Meier curves comparing the proportion of breast cancer-free participants by 25(OH)D group are shown in Fig 2. These curves were significantly different ( $P = 0.02$ ), with the highest proportion breast cancer-free at 4 years in the  $\geq 60$  ng/ml group (99.3%) and the lowest proportion breast cancer-free in the  $< 20$  ng/ml group (96.8%). The proportion with breast cancer was 78% lower for  $\geq 60$  ng/ml vs  $< 20$  ng/ml ( $P = 0.02$ ) in the Kaplan-Meier analysis.

Third, the results of multivariate Cox regression are shown in Table 2 and Fig 3. Women with 25(OH)D concentrations  $\geq 60$  ng/ml had an 80% lower risk of breast cancer compared to women with concentrations  $< 20$  ng/ml (HR = 0.20,  $P = 0.03$ ), adjusting for age, BMI, smoking status, calcium supplement intake, and study of origin (Table 2). The dose-response decrease in breast cancer risk for women with 25(OH)D concentrations of 20–39 ng/ml and 40–59 ng/ml vs  $< 20$  ng/ml are shown in Table 2. Age, BMI, smoking status, calcium supplement intake, and study of origin were not significant predictors of breast cancer risk in this pooled cohort. Among women free of breast cancer at one year (N = 4406), those with 25(OH)D concentrations  $\geq 60$  ng/ml had a 93% lower risk of breast cancer compared to women with concentrations  $< 20$  ng/ml (HR = 0.07,  $P = 0.02$ ). Spline regression with 25(OH)D as a continuous



**Fig 1. Frequency distribution and breast cancer incidence rates by 25(OH)D concentration, pooled cohort (N = 5038).** The bars represent the number of participants by groupings of 10 ng/ml (left y-axis), white dots represent the 25(OH)D concentration for each breast cancer case, black dots represent breast cancer incidence rates per 100,000 person-years for each 25(OH)D group (plotted at the median value for each group: 16, 25, 32, 39, 47, 57, and 70 ng/ml) (right y-axis). Vertical error bars represent the 95% confidence intervals.

<https://doi.org/10.1371/journal.pone.0199265.g001>

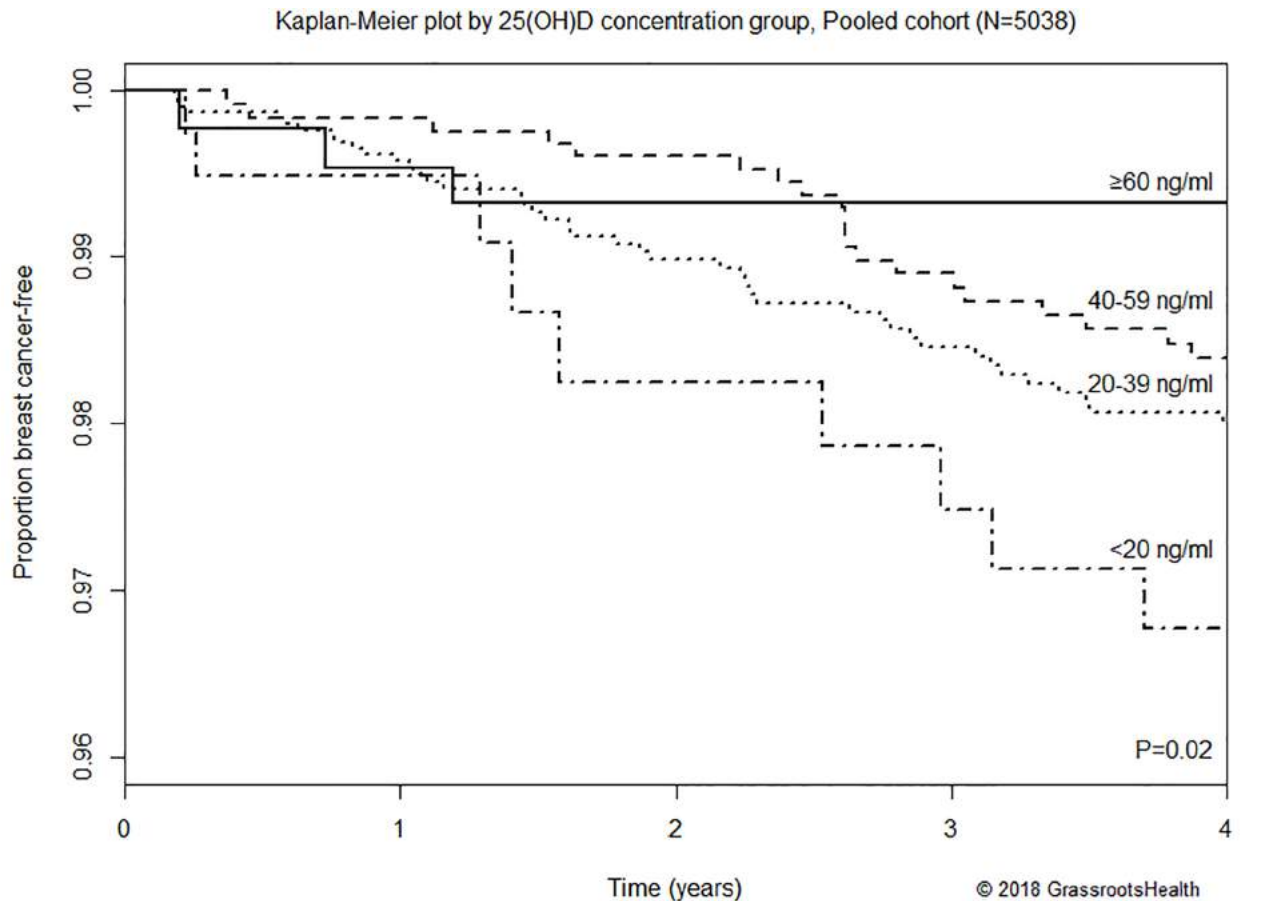
variable revealed consistently lower risk of breast cancer with higher 25(OH)D concentration, with no evidence of increased risk in the higher 25(OH)D concentrations (Fig 3).

Sensitivity analyses were conducted using 25(OH)D concentration quartiles, baseline 25(OH)D concentration only, excluding non-US residents in the GrassrootsHealth cohort, and for each individual cohort. All revealed lower risk of breast cancer with higher 25(OH)D concentration.

## Discussion

In this pooled cohort, 25(OH)D concentration was significantly inversely associated with breast cancer risk. All three analyses showed that women with 25(OH)D concentrations  $\geq 60$  ng/ml had significantly lower risk of breast cancer (~80%) compared to women with concentrations <20 ng/ml. There was a consistent decrease in breast cancer risk as 25(OH)D concentrations increased, with no evidence of increased risk in higher concentrations. Using a pooled cohort allowed for analysis across a wider range of serum 25(OH)D concentrations than any of the cohorts alone. While a novel approach, similar inclusion criteria were used for all three cohorts and analyses were adjusted for study of origin and breast cancer risk factors to account for differences in methodology and demographics.

The findings from this analysis support the previously reported inverse association between 25(OH)D and risk of breast cancer [7–18]. Another study assessed breast cancer risk across a broad 25(OH)D concentration range with similar findings [7]. In that hospital-based case control study, Lowe et al. found that women with 25(OH)D concentrations >60 ng/ml had an



Participants at risk

<20 ng/ml	390	285	231	260	262
20-39 ng/ml	3034	2510	2033	1819	1706
30-59 ng/ml	1181	1198	1318	1231	1121
≥60 ng/ml	433	425	382	367	315
Total	5038	4418	3964	3677	3404

**Fig 2. Kaplan-Meier plot comparing the proportion of breast cancer-free participants by 25(OH)D concentration, pooled cohort (N = 5038).** Participants were allowed to move between strata of 25(OH)D according to changes in 25(OH)D concentration over the course of the observation periods. Four-year cumulative breast cancer-free proportion was 99.3% among participants with 25(OH)D concentrations  $\geq 60$  ng/ml compared to 96.8% for those with 25(OH)D concentrations  $< 20$  ng/ml (the proportion with breast cancer was 78% lower for  $\geq 60$  ng/ml vs  $< 20$  ng/ml,  $P = 0.02$ ).

<https://doi.org/10.1371/journal.pone.0199265.g002>

83% lower risk of breast cancer than women with concentrations  $< 20$  ng/ml ( $P < 0.001$ ) [7]. The present study replicated these findings in a much larger, population-based study, thus increasing generalizability, and its prospective design enabled use of 25(OH)D values before diagnosis to distinguish between cause and effect.

The Women’s Health Initiative (WHI) trial did not find an association between assigned vitamin D treatment group and breast cancer risk [34]; however, low dosage (400 IU/day) and poor compliance (~50%) likely contributed to the lack of effect. A subsequent re-analysis of the WHI data showed a significant reduction in breast cancer risk among women not taking a vitamin D or calcium supplement before enrollment [35]. A few other nested case-control studies have found no effect [36–38]. Those studies used a single 25(OH)D measurement at enrollment to predict cancer risk over a long follow-up period. That study design does not accommodate changes in vitamin D status over time and diminishes the predictive value of

Table 2. Association between serum 25(OH)D and risk of breast cancer, pooled cohort (N = 5038).

	Hazard ratio (95% CI), adjusted for study of origin	P-value	Hazard ratio (95% CI), adjusted for study of origin and other covariates <sup>a</sup>	P-value
<b>Serum 25(OH)D</b>				
<20 ng/ml (<50 nmol/L)	Reference		Reference	
20–39 ng/ml (50–99 nmol/L)	0.61 (0.30,1.26)	0.19	0.55 (0.26,1.16)	0.12
40–59 ng/ml (100–149 nmol/L)	0.52 (0.24,1.16)	0.11	0.48 (0.20,1.14)	0.10
≥60 ng/ml (≥150 nmol/L)	<b>0.21 (0.05,0.85)</b>	<b>0.03</b>	<b>0.20 (0.05,0.82)</b>	<b>0.03</b>
P-value for trend		<b>0.03</b>		<b>0.04</b>

Bold values signify significant hazard ratios.

<sup>a</sup>Age, BMI, smoking status, and calcium supplement intake.

<https://doi.org/10.1371/journal.pone.0199265.t002>

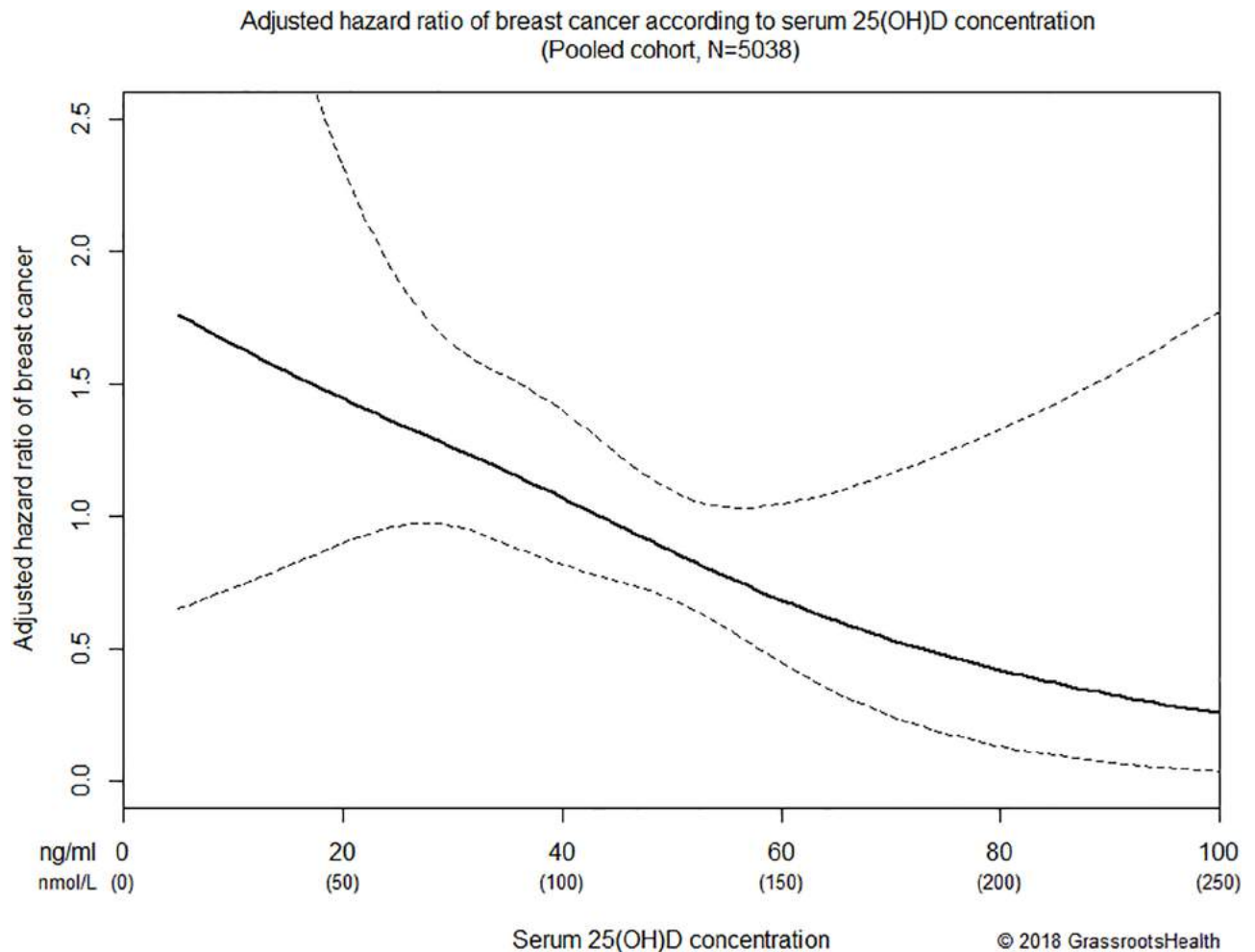


Fig 3. Association between serum 25(OH)D (as a continuous variable) and risk of breast cancer adjusted for age, BMI, smoking status, calcium supplement intake, and study of origin in the range of ≤100 ng/ml, pooled cohort (N = 5308). Solid black line represents the estimated hazard ratio for the Cox regression model with restricted cubic splines with three knots; dashed lines represent the 95% confidence interval of the estimate.

<https://doi.org/10.1371/journal.pone.0199265.g003>



the pre-diagnostic 25(OH)D measurement. Grant has shown that the magnitude and significance level for the relationship between 25(OH)D concentration and breast cancer risk are inversely related to the length of follow-up [39]. In this study, we performed a sensitivity analysis using only baseline 25(OH)D concentration (rather than multiple 25(OH)D values as a time varying covariate) and found a weaker association, also highlighting the diminished predictive value of 25(OH)D concentrations measured long before diagnosis.

Vitamin D may play a number of roles in the prevention of breast cancer development and progression. The biologically active form of vitamin D, 1,25(OH)<sub>2</sub>D<sub>3</sub>, binds to the vitamin D receptor (VDR) in normal breast epithelium and this complex regulates the cell cycle, promotes differentiation, increases cell-to-cell adhesion, protects cells from DNA damage, regulates cytokines, activates immune cells, and suppresses inflammation, all of which may act to reduce malignant transformations [6]. In breast cancer cells, this complex also activates apoptosis and other mechanisms to suppress tumor growth [6]. Additionally, other vitamin D metabolites from recently discovered alternative pathways, such as 20(OH)D<sub>3</sub> from the CYP11A1-mediated metabolism of vitamin D, have been found to have preventive effects similar to 1,25(OH)<sub>2</sub>D<sub>3</sub> [40–42]. Studies with respect to cancer treatment have demonstrated vitamin D's ability to degrade neoplasm [43] and detailed genomics have shown the profound effects vitamin D has on established neoplastic tissue [44]. These mechanisms of vitamin D action provide a possible biological explanation for a causal association between 25(OH)D and breast cancer risk and highlight the importance of assessing this association by the concentration of vitamin D metabolites in the serum and not by indirect measures such as treatment group or supplement intake amount which tend to be inadequate and prone to bias.

Whether our findings reflect prevention of the primary tumor or treatment of early stage, undiagnosed cancer by vitamin D is not clear. Of interest, the results for women who were followed and free of breast cancer at the end of the first year revealed a stronger association between 25(OH)D concentration and breast cancer risk (HR: 0.07,  $P = 0.02$  for  $\geq 60$  vs  $< 20$  ng/ml). There was only one case of breast cancer diagnosed after one year among those with 25(OH)D concentrations  $\geq 60$  ng/ml. This woman's diagnosis occurred 2 months into year two. Since there is a time delay between cancer initiation and diagnosis, many undiagnosed cancers that existed at enrollment would be diagnosed during the first year. Therefore, it is possible that analyses among women free of breast cancer at one year would better assess vitamin D's specific role in prevention rather than prevention and tumor arrest combined.

While the associations between breast cancer risk and age and calcium supplement intake were in the expected directions (higher risk with increased age and lower risk with higher calcium supplement intake), the effects of these risk factors did not reach statistical significance in this analysis. Since an inclusion criterion for these cohorts was age 55 years and older, the exclusion of younger women may have diminished the effect of age in this analysis. If younger women were included in this study we would expect to see a significant increase in breast cancer risk with age and possibly the effect of age-related changes in vitamin D metabolism. Also, information on dietary calcium intake was not available for the GrassrootsHealth cohort so this analysis only assessed supplemental calcium intake. However, it is possible that dietary calcium intake or total calcium intake would have been a significant predictor of breast cancer risk. Additionally, the small proportion of current smokers may have limited the ability of this study to detect an association between smoking status and breast cancer.

Strengths of this analysis include using a wider range of 25(OH)D concentrations than most other studies and employing multiple analysis techniques with findings of a similar magnitude. Also, using serum 25(OH)D concentration is a better indicator of vitamin D status and statistically more powerful than using treatment group or intake amount because it captures the effect of multiple vitamin D input sources (supplement, sun, and food), overcomes the

inherent bias of treatment compliance, and accounts for inter-individual variability in dose response [45]. All three cohorts participated in well-designed population-based studies that included multiple measurements of serum 25(OH)D, allowing for changes in vitamin D status over the course of the observation periods. Using multiple 25(OH)D measurements also overcomes the issue of diminished predictive value of 25(OH)D measurements at enrollment over long follow-up periods. The median amount of time between the 25(OH)D measurement prior to diagnosis and the date of diagnosis was fairly short (~6 months).

Limitations of the analysis include the possible lack of generalizability to younger women and men. However, since other studies have found a significant association between higher 25(OH)D concentrations and lower breast cancer risk in younger women [10–13,18], we would expect that this inverse association is applicable to women of all ages. Also, while there were no ethnic inclusion criteria, the vast majority of participants were non-hispanic white (100% in the 2007 Lappe cohort, 99% in the 2017 Lappe cohort, and 96% in the GrassrootsHealth cohort) so these results may not be generalizable to persons of other ethnicities. While inclusion criteria were matched across cohorts and analyses were adjusted for study of origin and breast cancer risk factors, differences in demographics and methods (e.g. study design, recruitment, and data collection tools) between the cohorts may have affected pooled analyses. Median follow-up time was longer for the Lappe RCTs than the GrassrootsHealth prospective cohort; however, all rate calculations used person-time denominators and analyses accounted for varying lengths of follow-up. Additional limitations include the use of self-reported data and not being able to control for some risk factors (family history of breast cancer, diet, and estrogen use).

The current NAM recommendation of 20 ng/ml (50 nmol/L) is based solely on bone health [28], yet it is widely used as the target level for all health conditions. The findings from this study suggest that breast cancer incidence could be substantially reduced by increasing 25(OH)D concentrations well above 20 ng/ml (50 nmol/L). Fig 3 shows tight confidence bands from about 30 to 55 ng/ml, which represents a decrease in breast cancer risk of ~38%. The high end of that range, 55 ng/ml, falls within the 40 to 60 ng/ml range recommended by a consortium of scientists and physicians to prevent several diseases including breast cancer [29]. Serum 25(OH)D concentrations between 40–60 ng/ml (100–150 nmol/L) are within the physiological range, as evidenced by traditionally living Africans who have a mean 25(OH)D concentration of 46 ng/ml (range: 23–68) with 62% having concentrations between 40–60 ng/ml [46]. In the range of 60 to 100 ng/ml, the downward trend continues. The widened confidence bands stem from the decreasing number of women with 25(OH)D concentrations in this upper range. Clarifying the nature of the association in this upper range should be a high priority for future investigations.

Focusing on primary prevention and implementing evidence-based interventions is needed to substantially decrease breast cancer incidence and associated mortality and economic costs. The national cost of female breast cancer in 2010 was estimated to be \$16.5 billion [47]. If women raised their 25(OH)D concentration from their current mean of approximately 30 ng/ml [48] to 55 ng/ml, the analysis from this study suggests that more than \$6 billion could be saved every year in the United States. Vitamin D status is a modifiable risk factor for breast cancer, and increasing 25(OH)D concentrations via supplementation at the population level is safe and affordable.

## Acknowledgments

The authors thank Dr. Keith Baggerly of MD Anderson for his expert advice regarding analyses of this pooled cohort and the participants who provided the information for this study.

This paper is dedicated to our friend and colleague, Dr. Robert Heaney, a teacher, mentor and explorer in the land of ideas, whose scientific curiosity lives on as an example for future generations. In recent years, he paved the way for the appropriate methodology for studying nutrients which has led to major breakthroughs in public health.

## Author Contributions

**Conceptualization:** Carole A. Baggerly, Cedric F. Garland, Joan M. Lappe.

**Data curation:** Sharon L. McDonnell, Christine B. French, Joan M. Lappe.

**Formal analysis:** Sharon L. McDonnell.

**Funding acquisition:** Carole A. Baggerly, Joan M. Lappe.

**Investigation:** Joan M. Lappe.

**Methodology:** Sharon L. McDonnell, Carole A. Baggerly, Christine B. French, Leo L. Baggerly, Cedric F. Garland, Edward D. Gorham, Joan M. Lappe.

**Project administration:** Carole A. Baggerly, Joan M. Lappe.

**Supervision:** Carole A. Baggerly, Joan M. Lappe.

**Validation:** Sharon L. McDonnell, Christine B. French.

**Writing – original draft:** Sharon L. McDonnell.

**Writing – review & editing:** Sharon L. McDonnell, Carole A. Baggerly, Christine B. French, Leo L. Baggerly, Cedric F. Garland, Edward D. Gorham, Bruce W. Hollis, Donald L. Trump, Joan M. Lappe.

## References

1. National Cancer Institute (NCI). Cancer Statistics for Breast (Female). <https://seer.cancer.gov/statfacts/html/breast.html>. Accessed November 13, 2017.
2. Siegel R. L., Miller K. D. and Jemal A. (2017), Cancer statistics, 2017. *CA: A Cancer Journal for Clinicians*, 67: 7–30.
3. Gorham ED, Garland CF, Garland FC. Acid haze air pollution and breast and colon cancer mortality in 20 Canadian cities. *Can J Public Health*. 1989 Mar-Apr; 80(2):96–100. PMID: 2720547
4. Gorham ED, Garland FC, Garland CF. Sunlight and breast cancer incidence in the USSR. *Int J Epidemiol*. 1990 Dec; 19(4):820–4. PMID: 2084008
5. Garland FC, Garland CF, Gorham ED, Young JF. Geographic variation in breast cancer mortality in the United States: a hypothesis involving exposure to solar radiation. *Prev Med*. 1990 Nov; 19(6):614–22. PMID: 2263572
6. Narvaez CJ, Matthews D, LaPorta E, Simmons KM, Beaudin S, Welsh J. The impact of vitamin D in breast cancer: genomics, pathways, metabolism. *Front Physiol*. 2014 Jun 13; 5:213. <https://doi.org/10.3389/fphys.2014.00213> PMID: 24982636
7. Lowe LC, Guy M, Mansi JL, Peckitt C, Bliss J, Wilson RG, et al. Plasma 25-hydroxy vitamin D concentrations, vitamin D receptor genotype and breast cancer risk in a UK Caucasian population. *Eur J Cancer*. 2005; 41:1164–1169. <https://doi.org/10.1016/j.ejca.2005.01.017> PMID: 15911240
8. Garland CF, Gorham ED, Mohr SB, Grant WB, Giovannucci EL, Lipkin M, et al. Vitamin D and prevention of breast cancer: pooled analysis. *J Steroid Biochem Mol Biol*. 2007 Mar; 103(3–5):708–11. <https://doi.org/10.1016/j.jsbmb.2006.12.007> PMID: 17368188
9. Abbas S, Linseisen J, Slinger T, Kropp S, Mutschelknauss EJ, Flesch-Janys D, et al. Serum 25-hydroxyvitamin D and risk of post-menopausal breast cancer—results of a large case-control study. *Carcinogenesis*. 2008 Jan; 29(1):93–9. <https://doi.org/10.1093/carcin/bgm240> PMID: 17974532
10. Bilinski K, Boyages J. Association between 25-hydroxyvitamin D concentration and breast cancer risk in an Australian population: an observational case-control study. *Breast Cancer Res Treat*. 2013 Jan; 137(2):599–607. <https://doi.org/10.1007/s10549-012-2381-1> PMID: 23239153

11. Yao S, Sucheston LE, Millen AE, Johnson CS, Trump DL, Nesline MK, et al. Pretreatment serum concentrations of 25-hydroxyvitamin D and breast cancer prognostic characteristics: a case-control and a case-series study. *PLoS One*. 2011 Feb 28; 6(2):e17251. <https://doi.org/10.1371/journal.pone.0017251> PMID: 21386992
12. Abbas S, Chang-Claude J, Linseisen J. Plasma 25-hydroxyvitamin D and premenopausal breast cancer risk in a German case-control study. *Int J Cancer*. 2009 Jan 1; 124(1):250–5. <https://doi.org/10.1002/ijc.23904> PMID: 18839430
13. Rejnmark L, Tietze A, Vestergaard P, Buhl L, Lehbrink M, Heickendorff L, et al. Reduced prediagnostic 25-hydroxyvitamin D levels in women with breast cancer: a nested case-control study. *Cancer Epidemiol Biomarkers Prev*. 2009 Oct; 18(10):2655–60. <https://doi.org/10.1158/1055-9965.EPI-09-0531> PMID: 19789365
14. Crew KD, Gammon MD, Steck SE, Hershman DL, Cremers S, Dworakowski E, et al. Association between plasma 25-hydroxyvitamin D and breast cancer risk. *Cancer Prev Res (Phila)*. 2009 Jun; 2(6):598–604.
15. Peppone LJ, Rickles AS, Janelsins MC, Insalaco MR, Skinner KA. The association between breast cancer prognostic indicators and serum 25-OH vitamin D levels. *Ann Surg Oncol*. 2012 Aug; 19(8):2590–9. <https://doi.org/10.1245/s10434-012-2297-3> PMID: 22446898
16. Wu Y, Sarkissyan M, Clayton S, Chlebowski R, Vadgama JV. Association of vitamin D3 level with breast cancer risk and prognosis in African-American and Hispanic women. *Cancers (Basel)*. 2017 Oct 24; 9(10).
17. O'Brien KM, Sandler DP, Taylor JA, Weinberg CR. Serum vitamin D and risk of breast cancer within five years. *Environ Health Perspect*. 2017 Jul 6; 125(7):077004. <https://doi.org/10.1289/EHP943> PMID: 28728134
18. Park S, Lee DH, Jeon JY, Ryu J, Kim S, Kim JY, et al. Serum 25-hydroxyvitamin D deficiency and increased risk of breast cancer among Korean women: a case-control study. *Breast Cancer Res Treat*. 2015 Jul; 152(1):147–154. <https://doi.org/10.1007/s10549-015-3433-0> PMID: 26037255
19. Lappe JM, Travers-Gustafson D, Davies KM, Recker RR, Heaney RP. Vitamin D and calcium supplementation reduces cancer risk: results of a randomized trial. *Am J Clin Nutr*. 2007 Jun; 85(6):1586–91. <https://doi.org/10.1093/ajcn/85.6.1586> PMID: 17556697
20. McDonnell SL, Baggerly C, French CB, Baggerly LL, Garland CF, Gorham ED, et al. Serum 25-hydroxyvitamin D concentrations  $\geq 40$  ng/ml are associated with  $>65\%$  lower cancer risk: pooled analysis of randomized trial and prospective cohort study. *PLoS One*. 2016 Apr 6; 11(4):e0152441. <https://doi.org/10.1371/journal.pone.0152441> PMID: 27049526
21. Lappe J, Watson P, Travers-Gustafson D, Recker R, Garland C, Gorham E, et al. Effect of vitamin D and calcium supplementation on cancer incidence in older women: a randomized clinical trial. *JAMA*. 2017 Mar 28; 317(12):1234–1243. <https://doi.org/10.1001/jama.2017.2115> PMID: 28350929
22. Lappe JM, Davies KM, Travers-Gustafson D, Heaney RP. Vitamin D status in a rural postmenopausal female population. *J Am Coll Nutr*. 2006; 25:395–402. PMID: 17031008
23. Eyles D, Anderson C, Ko P, Jones A, Thomas A, Burne T, et al. A sensitive LC/MS/MS assay of 25OH vitamin D(3) and 25OH vitamin D(2) in dried blood spots. *Clin Chim Acta*. 2009; 403(1–2):145–151. <https://doi.org/10.1016/j.cca.2009.02.005> PMID: 19232332
24. Nyi Nyi Naing. Easy Way to Learn Standardization: Direct and Indirect Methods. *Malays J Med Sci*. 2000 Jan; 7(1): 10–15. PMID: 22844209
25. Van den Broeck J, Brestoff JR. *Epidemiology: Principles and Practical Guidelines*. Dordrecht: Springer, 2013: 455.
26. Rothman KJ, Greenland S, Lash T. *Modern Epidemiology: Third Edition*. Philadelphia, PA: Lippincott-Raven, 1998: 321.
27. Selvin S. *Statistical Tools for Epidemiologic Research*. Oxford: Oxford University Press, 2011: 258–260.
28. National Academy of Sciences–Institute of Medicine–Food and Nutrition Board. Dietary reference intakes for calcium and vitamin D. Washington (DC): National Academy Press; 2010.
29. Garland CF, Gorham ED, Mohr SB, Garland FC. Vitamin D for cancer prevention: global perspective. *Ann Epidemiol*. 2009 Jul; 19(7):468–83. <https://doi.org/10.1016/j.annepidem.2009.03.021> PMID: 19523595
30. Holick MF. Vitamin D, sunlight and cancer connection. *Anticancer Agents Med Chem*. 2013 Jan; 13(1):70–82. PMID: 23094923
31. Cannell JJ, Hollis BW, Zasloff M, Heaney RP. Diagnosis and treatment of vitamin D deficiency. *Expert Opin Pharmacother*. 2008 Jan; 9(1):107–18. <https://doi.org/10.1517/14656566.9.1.107> PMID: 18076342

32. Bischoff-Ferrari HA, Giovannucci E, Willett WC, Dietrich T, Dawson-Hughes B. Estimation of optimal serum concentrations of 25-hydroxyvitamin D for multiple health outcomes. *Am J Clin Nutr.* 2006 Jul; 84(1):18–28. <https://doi.org/10.1093/ajcn/84.1.18> PMID: 16825677
33. Souberbielle JC, Body JJ, Lappe JM, Plebani M, Shoenfeld Y, Wang TJ, et al. Vitamin D and musculoskeletal health, cardiovascular disease, autoimmunity and cancer: Recommendations for clinical practice. *Autoimmun Rev.* 2010 Sep; 9(11):709–15. <https://doi.org/10.1016/j.autrev.2010.06.009> PMID: 20601202
34. Neuhouwer ML, Manson JE, Millen A, Pettinger M, Margolis K, Jacobs ET, et al. The influence of health and lifestyle characteristics on the relation of serum 25-hydroxyvitamin D with risk of colorectal and breast cancer in postmenopausal women. *Am J Epidemiol.* 2012 Apr 1; 175(7):673–84. <https://doi.org/10.1093/aje/kwr350> PMID: 22362582
35. Bolland MJ, Grey A, Gamble GD, Reid IR. Calcium and vitamin D supplements and health outcomes: a reanalysis of the Women's Health Initiative (WHI) limited-access data set. *Am J Clin Nutr.* 2011 Oct; 94(4):1144–9. <https://doi.org/10.3945/ajcn.111.015032> PMID: 21880848
36. Freedman DM, Chang SC, Falk RT, Purdue MP, Huang WY, McCarty CA, et al. Serum levels of vitamin D metabolites and breast cancer risk in the prostate, lung, colorectal, and ovarian cancer screening trial. *Cancer Epidemiol Biomarkers Prev.* 2008 Apr; 17(4):889–94. <https://doi.org/10.1158/1055-9965.EPI-07-2594> PMID: 18381472
37. McCullough ML, Stevens VL, Patel R, Jacobs EJ, Bain EB, Horst RL, et al. Serum 25-hydroxyvitamin D concentrations and postmenopausal breast cancer risk: a nested case control study in the Cancer Prevention Study-II Nutrition Cohort. *Breast Cancer Res.* 2009; 11(4):R64. <https://doi.org/10.1186/bcr2356> PMID: 19715600
38. Kühn T, Kaaks R, Becker S, Eomoi PP, Clavel-Chapelon F, Kvaskoff M, et al. Plasma 25-hydroxyvitamin D and the risk of breast cancer in the European prospective investigation into cancer and nutrition: a nested case-control study. *Int J Cancer.* 2013 Oct 1; 133(7):1689–700. <https://doi.org/10.1002/ijc.28172> PMID: 23526380
39. Grant WB. 25-hydroxyvitamin D and breast cancer, colorectal cancer, and colorectal adenomas: case-control versus nested case-control studies. *Anticancer Res.* 2015 Feb; 35(2):1153–60. PMID: 25667506
40. Slominski AT, Kim TK, Shehabi HZ, Semak I, Tang EK, Nguyen MN, et al. In vivo evidence for a novel pathway of vitamin D3 metabolism initiated by P450<sub>scc</sub> and modified by CYP27B1. *FASEB J.* 2012 Sep; 26(9):3901–3915. <https://doi.org/10.1096/fj.12-208975> PMID: 22683847
41. Slominski AT, Kim TK, Li W, Postlethwaite A, Tieu EW, Tang EK, et al. Detection of novel CYP11A1-derived secosteroids in the human epidermis and serum and pig adrenal gland. *Sci Rep.* 2015 Oct; 5:14875. <https://doi.org/10.1038/srep14875> PMID: 26445902
42. Slominski AT, Kim TK, Li W, Tuckey RC. Classical and non-classical metabolic transformation of vitamin D in dermal fibroblasts. *Exp Dermatol.* 2016 Mar; 25(3): 231–232. <https://doi.org/10.1111/exd.12872> PMID: 26440881
43. Marshall DT, Savage SJ, Garrett-Mayer E, Keane TE, Hollis BW, Horst RL, et al. Vitamin D3 supplementation at 4000 international units per day for one year results in a decrease of positive cores at repeat biopsy in subjects with low-risk prostate cancer under active surveillance. *J Clin Endocrinol Metab.* 2012 Jul; 97(7):2315–24. <https://doi.org/10.1210/jc.2012-1451> PMID: 22508710
44. Hardiman G, Savage SJ, Hazard ES, Wilson RC, Courtney SM, Smith MT, et al. Systems analysis of the prostate transcriptome in African-American men compared with European-American men. *Pharmacogenomics.* 2016 Jul; 17(10):1129–1143. <https://doi.org/10.2217/pgs-2016-0025> PMID: 27359067
45. Garland CF, French CB, Baggerly LL, Heaney RP. Vitamin D supplement doses and serum 25-hydroxyvitamin D in the range associated with cancer prevention. *Anticancer research.* 2011; 31(2):607–11. PMID: 21378345
46. Luxwolda MF, Kuipers RS, Kema IP, Dijck-Brouwer DA, Muskiet FA. Traditionally living populations in East Africa have a mean serum 25-hydroxyvitamin D concentration of 115 nmol/l. *Br J Nutr.* 2012 Nov 14; 108(9):1557–61. <https://doi.org/10.1017/S0007114511007161> PMID: 22264449
47. Mariotto AB, Yabroff KR, Shao Y, Feuer EJ, Brown ML. Projections of the cost of cancer care in the United States: 2010–2020. *J Natl Cancer Inst.* 2011 Jan 19; 103(2):117–28. <https://doi.org/10.1093/jnci/djq495> PMID: 21228314
48. Centers for Disease Control and Prevention (CDC). National Center for Health Statistics (NCHS). National Health and Nutrition Examination Survey. Hyattsville, MD: U.S. Department of Health and Human Services, Centers for Disease Control and Prevention, 2011–2012. [http://www.cdc.gov/nchs/nhanes/about\\_nhanes.htm](http://www.cdc.gov/nchs/nhanes/about_nhanes.htm). Accessed November 21, 2017.